

LUCE

THE LIGHT AT THE PALM





- ✦ ELEGANT ARCHITECTURE
- ✦ STUNNING INTERIORS
- ✦ ELEVATED LIFESTYLE
- ✦ ICONIC LOCATION
- ✦ BRILLIANT DESIGNS



ELEGANT ARCHITECTURE





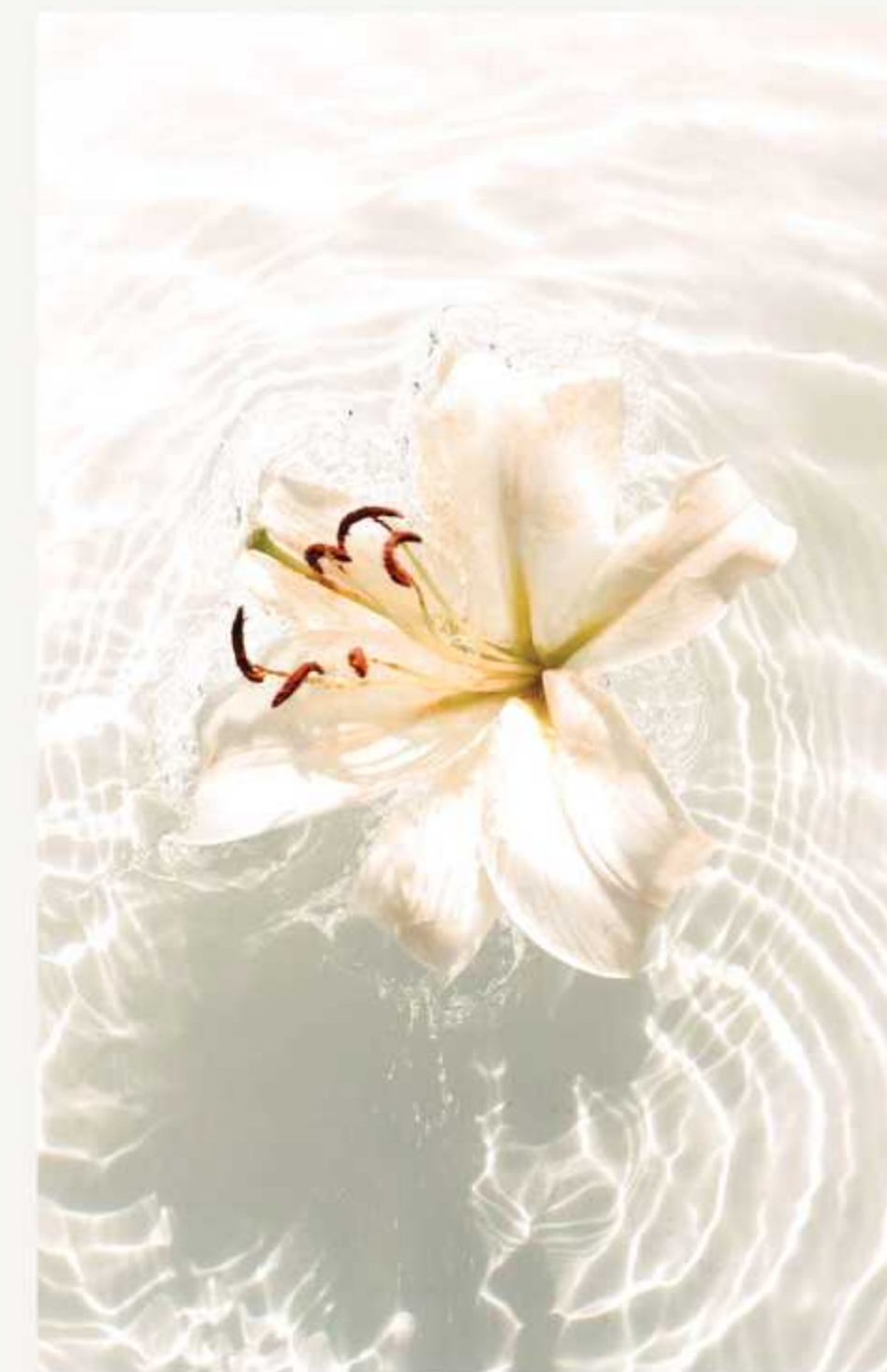


NATURE INSPIRED DESIGNS



A MAGNIFICENT BUILDING,
SHAPED BY GLASS AND
LIGHT / LUCE EMBRACES ITS
SEAFRONT SETTING.

This sublime building, composed of brilliant
glass panels and oriented towards the
sea and sunlight, becomes a showcase of
captivating design.









STUNNING INTERIORS





ELEGANT ESSENCE



THE LUSTRE OF EXQUISITE
NATURAL MATERIALS.
AND INTERIORS BATHED IN
NATURAL LIGHT.

With a combination of soft lines and delicate
tones, the luminescent interiors of LUCE
sparkle from sunrise to sunset.

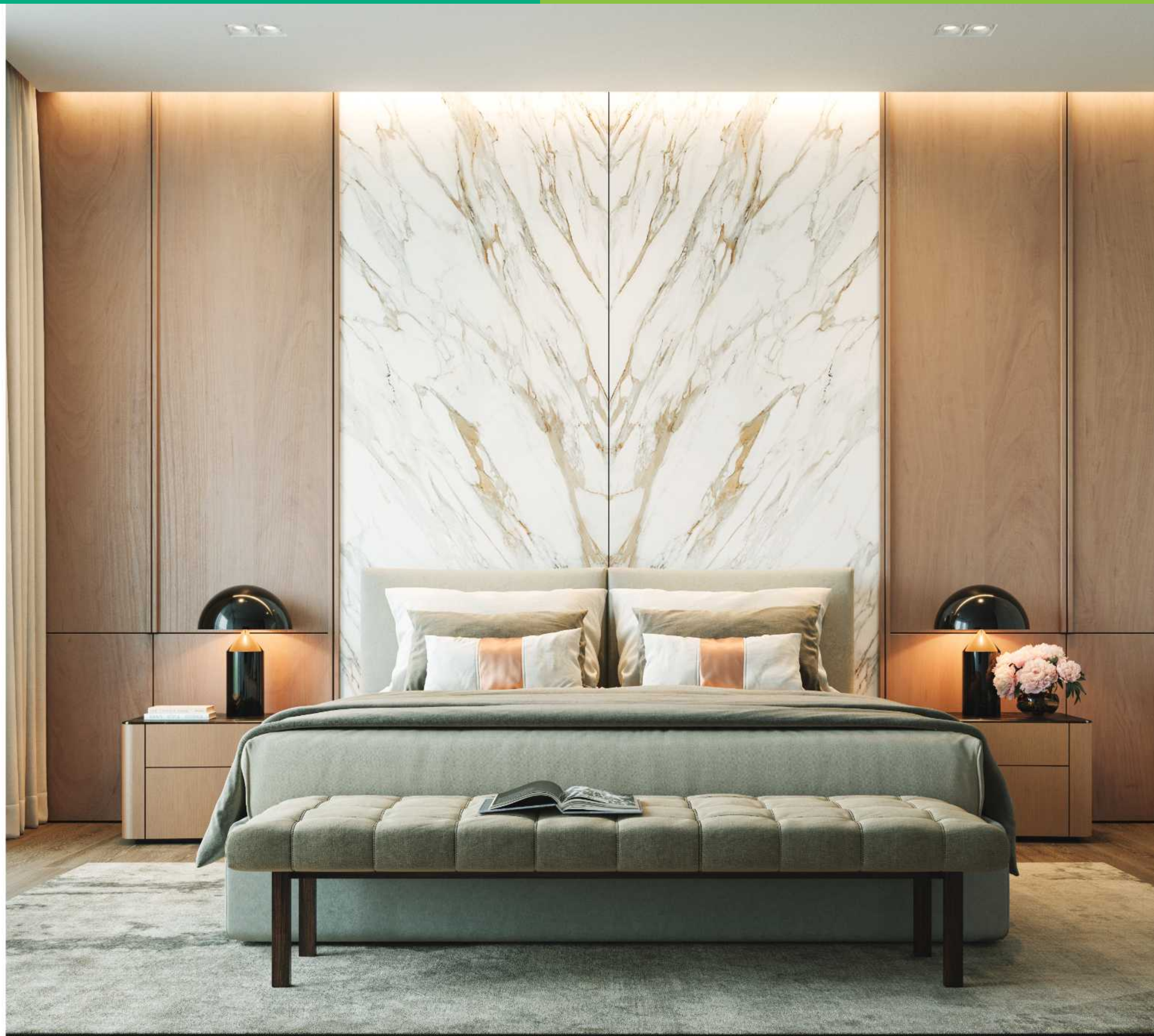




BRILLIANTLY SPACIOUS APARTMENTS



The sophisticated design aesthetic incorporates shades of white, earthy hues, and fine natural materials, to create a polished and serene, living environment that feels open and bright. Enjoy comfortable everyday moments in a sumptuous home, filled with natural light.









ELEVATED LIFESTYLE







EXCEPTIONAL LIFESTYLE



EXCLUSIVE AMENITIES
THAT BRIGHTEN MOODS
AND LIFESTYLES.

LUCE shines a light on wellness and community. The exceptional lifestyle amenities of this spectacular property enliven each day.





ENDLESS MOTIVATION



FIRST-CLASS TRAINING
EQUIPMENT THAT
WILL ENSURE A POST-
WORKOUT GLOW.

Find the motivation to work-out in
this beautiful private resident's gym,
whilst admiring the glorious beach
views that stretch out before you.





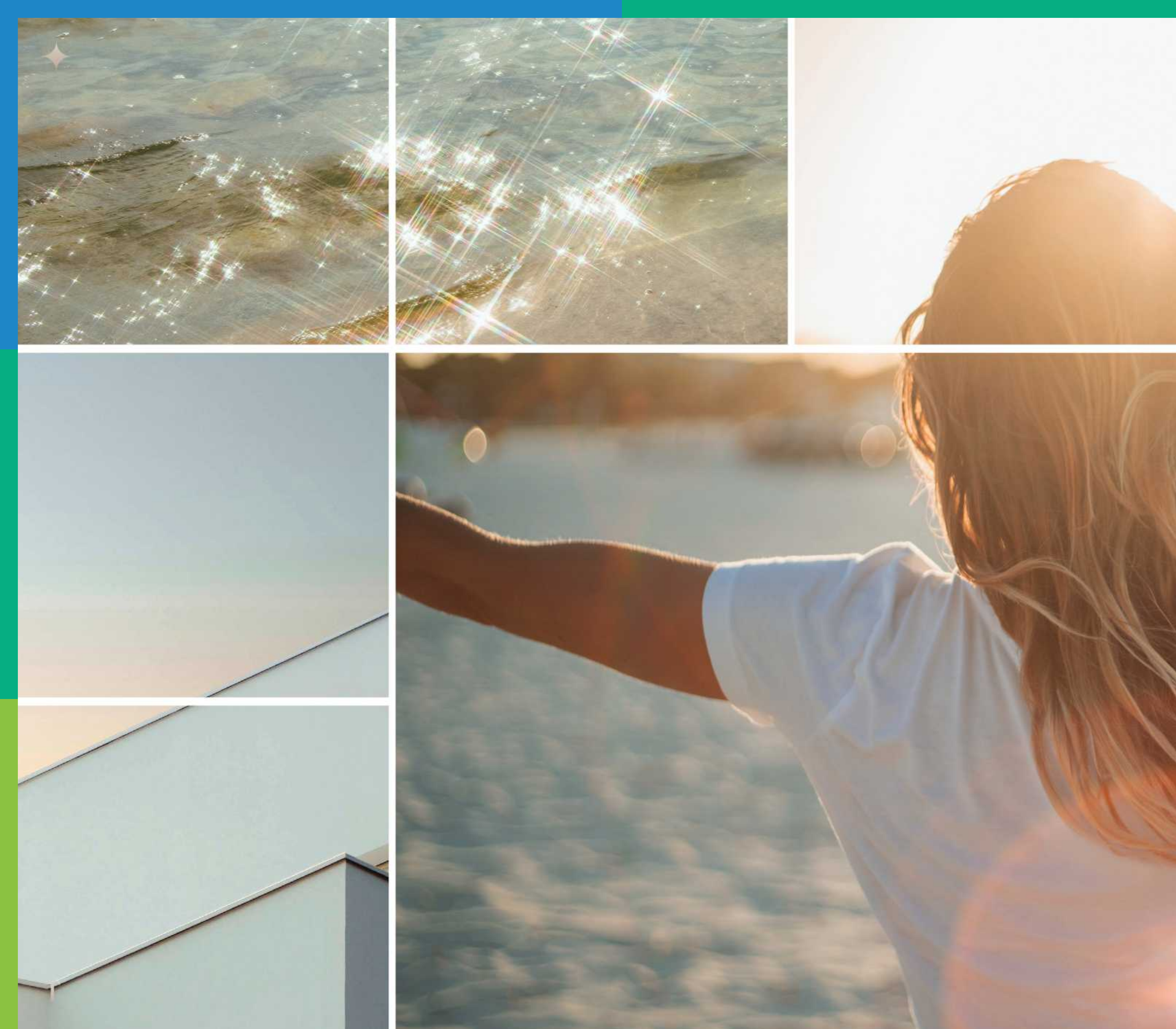
A WORLD OF FUN



DISCOVER EDUCATIONAL
ACTIVITIES THAT
ENTERTAIN AND
ENLIGHTEN.

Little faces will light up as they
explore an exciting array games in
the beautifully decorated children's
playroom.





SOAK UP THE SUN



DIRECT BEACH ACCESS
BRINGS THE RESORT-STYLE
ATMOSPHERE TO YOUR DOOR
AND A GLISTENING INFINITY
POOL PLACED AT THE
HEART OF A LANDSCAPED,
BEACHFRONT GARDEN.

Spend your days in this lush, natural setting,
complete with kid's pool, plunge pool, and
jacuzzi.



ICONIC LOCATION

LUCE

POINTS OF INTEREST

1. Sheikh Zayed Rd

3. Burj Al-Arab

5. Umm Suqeim

7. Al Sufouh Road

2. Dubai Marina

4. The Beach

6. Emirates Golf Club

LUCE

THE LIGHT AT THE PALM

FOR MORE INFORMATION PLEASE CONTACT



 +971 55 476 7630
 +971 4 368 7878
 info@afsrealestate.com
 www.afsrealestate.com



 +971 50 674 2020
 +971 4 368 7878
 info@dubricks.com
 www.dubricks.com